
From Recruitment To Retention: Innovative Hr Strategies For Employee Engagement

Dr.Biju Gopal

Associate Professor of Commerce, Government College Ambalapuzha, Alappuzha (Dist), Kerala, Indiabijulecturer@gmail.com

How to cite this article: Biju Gopal (2024) From Recruitment To Retention: Innovative Hr Strategies For Employee Engagement. *Library Progress International*, 44(3), 27798-27806

Abstract— This study looks at creative HR (human resources) tactics that promote employee engagement from hiring to long-term retention. Engagement, which includes emotional and psychological commitment, has emerged as a critical component of organizational performance in a competitive labour market where employee expectations are changing. The study investigates the ways in which work-life balance programs, focused onboarding, ongoing career development, and individualized recruitment strategies raise employee happiness and engagement levels. HR departments may anticipate turnover risks and discover engagement drivers by utilizing cutting-edge technology like artificial intelligence and data analytics. This enables more proactive and customized engagement tactics. This study also includes case studies from businesses that have effectively applied these tactics, emphasizing real-world uses and outcomes. The goal of this study is to give HR directors a framework for implementing creative strategies that will draw in and keep top talent while also boosting organizational resilience and productivity.

Keywords— *Artificial Intelligence, Data Analytics, Employee Engagement, Employee Retention, Gamified Onboarding, Human Resources, Predictive Analytics, Recruitment Strategies, Sentiment Analysis, Work-Life Balance.*

Introduction

1.1 A Summary of Employee Involvement in Contemporary HR Procedures:

Employee engagement, which reflects a worker's emotional and psychological bond with their company, has become a key element of HR strategy. Higher levels of motivation, dedication, and productivity are frequently displayed by engaged workers, and these traits all directly support the success of the company. Engagement is becoming more and more important in today's competitive job market as companies realize that giving workers a feeling of purpose and belonging reduces attrition and improves workplace culture. Setting the scene for why creative HR tactics are crucial for luring and keeping talent, this subtopic will give background information on the significance of engagement. It highlights the necessity for HR departments to abandon conventional methods and embrace a proactive strategy for employee engagement, which will eventually benefit the company and its employees.

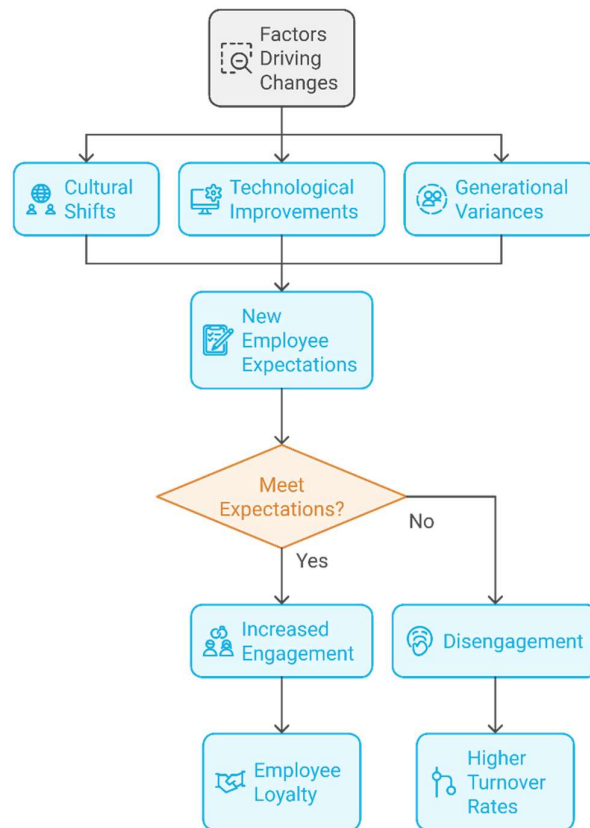


Fig. 2: Changes in Employee Expectations

1.2 Changes in Employee Expectations at Work:

Employee expectations for their workplace and their responsibilities within it have changed dramatically in recent years. What employees look for in their workplaces has changed due to cultural shifts, technology improvements, and generational variances. HR must change its strategy since the modern workforce values growth opportunities, meaningful work, flexibility, and a healthy work-life balance. Since employees are now more likely to disengage or leave employment that do not correspond with their beliefs or aspirations, this section examines how these changing expectations affect engagement. By highlighting these developments, it becomes easier to see why creative approaches are required to satisfy these new needs and encourage enduring employee loyalty.

1.3 The Effect of Employee Engagement on the Performance of the Organization:

Positive organizational outcomes including higher productivity, better job satisfaction, and more organizational resilience are strongly correlated with high levels of employee engagement. Employee engagement improves team performance and overall efficiency since engaged workers are usually more committed and willing to go above and beyond the call of duty. The case for investing in employee engagement methods is strengthened by this section's analysis of the substantial research demonstrating the connection between engagement and organizational success. It also emphasizes how participation enhances an organization's reputation and flexibility, which eventually gives it a competitive edge in luring top people.

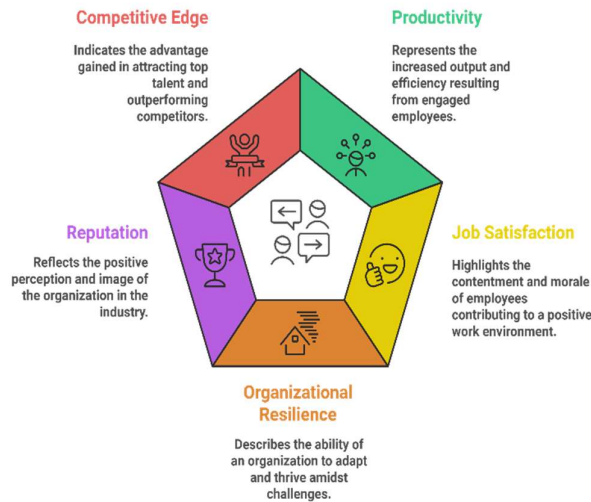


Fig. 1: Effects of Employee Engagement

1.4 Difficulties with Conventional HR Methods:

Conventional HR strategies frequently ignore the relational components of employee engagement in favour of transactional operations like hiring, payroll, and compliance. These procedures are frequently reactive rather than proactive, which results in lost chances for early intervention in possible engagement problems. Furthermore, traditional approaches might not adequately handle the needs of specific employees or evolving workforce dynamics. These drawbacks are discussed in this part, which also shows how traditional HR is unable to meet the needs of a varied, modern workforce. It creates the need for creative, technology-driven, tailored, and flexible HR practices.

1.5 Technology's Place in Contemporary HR Strategies:

Technology has completely changed HR procedures by making data-driven methods of hiring, onboarding, and employee engagement possible. HR staff are able to predict turnover, analyse engagement trends, and tailor recruitment through the use of artificial intelligence (AI) and data analytics. This section examines how technology is changing human resources by facilitating more proactive, customized engagement tactics, such as AI-driven insights for individualized career development and automated hiring procedures. Emphasizing the function of technology highlights how it can turn HR into a strategic partner that actively improves organizational outcomes and employee experiences in addition to managing them.

1.6 The Study's Objective:

Examining cutting-edge HR tactics that improve employee engagement throughout the employee lifecycle—from hiring to long-term retention—is the goal of this study. This study aims to give HR directors practical advice on how to draw in, keep, and satisfy talent in a cutthroat industry by examining modern engagement-promoting strategies. In order to lay the groundwork for the subsequent in-depth examination of particular techniques and case studies, the purpose section explicitly articulates the study's goal to look into and provide advice on efficient HR tactics.

1.7 Questions and Research Goals:

The study's aims are outlined in the research objectives, which also include discovering creative HR strategies, comprehending how they affect employee engagement, and examining effective implementations in actual environments. Understanding which HR tactics best increase engagement and how technology might help these efforts could be important research topics. This section lays out the research framework for the study, making it evident to readers what the paper aims to answer and the particular questions that will be the focus of its investigation.

1.8 Importance of the Research:

This study's importance stems from its applicability to HR specialists and company executives who seek to increase employee retention and satisfaction in a changing labour market. This research offers important insights into methods that not only improve employee experiences but also boost general productivity and resilience, as engagement becomes a crucial criterion for organizational health. This section sets a standard for contemporary HR strategies by outlining the significance of the study's findings for businesses hoping to preserve a competitive edge through a highly engaged workforce.

1.9 The Range of Creative HR Techniques for Employee Involvement:

An outline of the main HR tactics discussed in the article is given in this part. These include work-life balance programs, focused onboarding, continuing growth, and individualized recruitment. Each of these tactics addresses a distinct stage of the employee lifecycle and contributes to maintaining engagement. By describing these topics, the article provides a thorough framework for investigating the ways in which innovative practices affect employee engagement and contribute to the development of a smooth hiring and retention process.

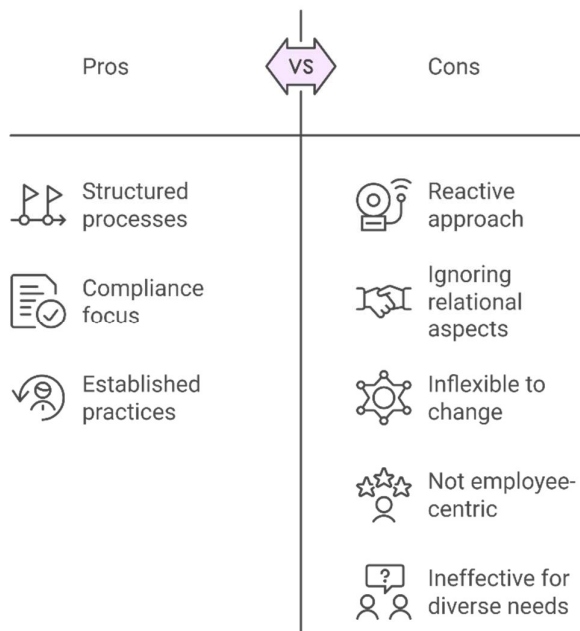


Fig. 3 Pros and Cons of Conventional HR Methods

1.10 Summary of Case Studies Applied in the Study:

Examples from the real world offer a useful viewpoint on the application of creative HR techniques and their results. The case studies that demonstrate effective implementations of contemporary HR practices across a range of businesses are briefly introduced in this section. These case studies, which look at companies that have successfully raised engagement, provide insightful information and proof to back up the study's suggestions, making the research findings more applicable and useful to HR professionals.

2. Literature Review

The impact of AI-driven onboarding systems on worker engagement, productivity, and retention is examined by **Gupta et al. (2023)**. According to their findings, AI-assisted onboarding improves learning outcomes and productivity by tailoring training and development to each individual's needs. AI facilitates a smoother transition into positions by automating the delivery of personalized material and determining each employee's learning rate, which raises engagement. According to the report, businesses who use AI for onboarding realize faster productivity milestones and greater satisfaction rates, indicating AI's crucial role in creating flexible and interesting employee experiences from the start.

According to **Kumar et al. (2023)**, maintaining skilled workers requires ongoing learning and growth. Their research shows that employees report higher levels of engagement and loyalty when they take advantage of career development opportunities including professional courses, skill workshops, and mentorship. According to the study, companies that invest in continuous learning show their employees that they appreciate their development, which encourages loyalty over the long run. The authors contend that cultivating a culture of development enhances retention and fortifies the organization's capacity to adjust to demands for innovation and skill changes.

Singh et al. (2022) investigate gamification in HR procedures, emphasizing new hire training and onboarding. According to their research, onboarding systems that incorporate game-like features like interactive tests, level achievements, and rewards greatly increase participant engagement. Gamified onboarding helps new workers meet productivity goals more quickly and report greater levels of satisfaction. According to the research, gamification makes it easier and more pleasurable for employees to learn and integrate by breaking down complex knowledge into digestible chunks. According to Singh et al., gamification is an essential strategy for HR to invigorate onboarding procedures and foster early engagement.

Predictive analytics in HR, namely its use for turnover prediction, is examined by **Patel et al. (2022)**. According to their research, HR can identify workers who are at risk of disengagement and possible turnover by using predictive models, which enables focused intervention. According to the findings, HR may lower turnover rates by developing proactive retention tactics including customized engagement programs with the aid of data-driven insights on turnover prediction. According to Patel et al., predictive analytics turns human resources from a reactive to a proactive function, improving employee retention by identifying risks early and developing employee-specific intervention techniques.

The effect of flexible work schedules on employee retention and engagement is examined by **Mishra et al. (2021)**. According to their research, remote work choices and flexible schedules greatly increase employee engagement, especially among younger employees who place a high value on work-life balance. Companies can increase job satisfaction and decrease burnout by providing flexibility, according to Mishra et al., which will increase retention rates. Companies that adopt flexible rules can better satisfy changing employee expectations and maintain their competitiveness in luring and keeping top people, according to the report, which emphasizes flexibility as a key engagement approach.

Employee wellness initiatives and their impact on engagement and retention are the main topics of **Ahmed et al. (2021)**. According to their research, work-life balance coaching, fitness regimens, and mental health services are examples of wellness efforts that have a good correlation with employee engagement and satisfaction. According to Ahmed et al., companies that provide extensive wellness programs report lower absenteeism and higher employee retention rates because staff members feel supported in both their personal and professional lives. In order to foster a healthy work environment that encourages engagement and loyalty, the authors emphasize wellness as a strategic HR approach.

Jain et al. (2020) investigate how employee feedback might improve satisfaction and engagement. According to their results, establishing a culture of openness and responsiveness requires frequent feedback loops where staff members can express their thoughts and recommendations. Companies using open feedback systems report improved employee satisfaction and retention because workers believe their opinions are respected, according to Jain et al. According to the survey, HR should place a high priority on transparent and consistent feedback procedures since they promote long-term engagement and allow for ongoing enhancements to the employee experience.

Data analytics is investigated by **Verma et al. (2020)** in order to evaluate trends in employee engagement. According to their research, HR can spot patterns that point to engagement or disengagement by monitoring engagement measures including training attendance, absenteeism, and performance reviews. According to Verma et al., HR departments can increase efficacy by customizing engagement methods according to the needs of individual employees thanks to data analytics. The study promotes the use of analytics in HR to support a data-driven strategy that optimizes employee retention and satisfaction by prompt, empirically supported actions.

The effect of mentorship programs on sustained employee engagement is the main topic of **Rao et al. (2019)**. Their results show that by encouraging personal development, mentoring not only speeds up onboarding but also improves engagement and retention. According to Rao et al., mentors give employees insightful advice while fostering a feeling of belonging. According to the study's findings, organizations with robust mentorship programs see higher employee retention rates because their staff members feel valued and supported. One important engagement tactic that is emphasized is mentoring, especially for new hires who want to form deep connections within the company.

Personalized career development plans are examined by **Chopra et al. (2019)** as a strategy for engagement. According to their research, workers are more interested and dedicated to their jobs when they receive career counselling that is based on their goals and strengths. According to Chopra et al., individualized development plans boost employee retention and morale by outlining a clear path for improvement. As employees grow with the company, the study finds that HR departments that prioritize individualized career development not only increase organizational talent pools but also foster loyalty.

Thomas et al. (2018) investigate how work-life balance programs affect employee engagement and retention. According to their research, companies who provide benefits like wellness days, family leave, and flexible work schedules saw increases in employee retention and decreases in burnout. According to Thomas et al., work-life balance rules create a supportive work environment by aligning with employees' personal beliefs. In order to satisfy the demands of the modern workforce and enhance long-term retention, the report recommends that HR departments incorporate work-life balance programs into their engagement strategy.

Fernandez et al. (2018) investigate how digital platforms promote participation and teamwork. According to their research, digital tools that facilitate peer recognition, project collaboration, and knowledge sharing increase engagement by fostering a connected workplace. According to Fernandez et al., collaborative platforms foster an inclusive workplace atmosphere and improve employee interaction. Because digital platforms help maintain engagement and promote a unified organizational culture, the study emphasizes the significance of digital transformation in HR, particularly for companies with remote workers.

Sharma et al. (2017) look into AI-powered talent acquisition as a way to increase engagement and recruitment effectiveness. According to their research, AI technologies expedite the hiring process, lessen bias, and pair applicants with positions that best suit their qualifications. According to Sharma et al., AI-enhanced hiring not only speeds up the hiring process but also guarantees that new workers are qualified for their positions, which increases early engagement. The study promotes AI's contribution to making hiring procedures more accurate, efficient, and interesting.

As an alternative to yearly performance reviews, **Nair et al. (2017)** investigate continuous performance management. According to their findings, ongoing feedback enables staff members to continuously modify and enhance their performance, maintaining their motivation and engagement. According to Nair et al., this strategy encourages a growth-oriented culture, which has a direct effect on staff retention. According to the study, ongoing performance monitoring fosters a vibrant, encouraging workplace where staff members always feel appreciated, which increases employee loyalty and lowers attrition.

The impact of employee appreciation programs on retention and engagement is examined by **Kapoor et al. (2016)**. According to their research, formal recognition programs that include prizes, peer nominations, and public recognition greatly increase involvement and morale. According to Kapoor et al., when workers feel valued, their loyalty to the company grows, which has a direct effect on retention rates. The study comes to the conclusion that since appreciation creates a positive, loyalty-driven work culture, HR should give recognition programs top priority as a strategic engagement tool.

Joshi et al. (2016) concentrate on how employee engagement is affected by workplace culture and values

alignment. According to their findings, workers are happier and more engaged when their personal beliefs coincide with those of the company. Joshi et al. contend that in order to guarantee cultural fit, HR should give value alignment top priority during the hiring and onboarding processes. According to the study's findings, when employees believe their job is contributing to a common goal, cultivating a values-driven culture can greatly increase engagement and lower attrition.

Employee autonomy is examined by **Bose et al. (2015)** as a factor in job satisfaction and engagement. According to their research, autonomy increases commitment and job satisfaction by permitting variable project choices and decision-making freedom. According to Bose et al., autonomy gives workers more authority and encourages a sense of accountability. Since autonomy has a favourable correlation with engagement and retention, especially in creative and knowledge-based work contexts, the study recommends that HR implement policies that foster autonomy.

3. Methodology

1. **Predictive Analytics:** These equations give HR the ability to spot trends and predict employee behaviours, such the chance of turnover or shifts in engagement levels. By enabling proactive interventions, predictive analytics models assist HR in customizing their recruitment and retention tactics. These technologies directly address the title's retention component by providing firms with insight into possible engagement problems.

- **Turnover Probability:**

$$P(\text{Turnover}) = \sigma(\beta_0 + \beta_1 X_1 + \beta_2 X_2 + \dots + \beta_n X_n) \quad (1)$$

where σ is the logistic function, and X_i are employee characteristics.

- **Expected Retention Rate:**

$$R_{\text{expected}} = \frac{1}{1 + e^{-(\beta_0 + \beta_1 X_1 + \beta_2 X_2 + \dots + \beta_n X_n)}} \quad (2)$$

2. **Sentiment Analysis:** Sentiment analysis equations examine employee feedback and conversations using natural language processing. HR departments may better understand engagement levels and improve their retention and engagement strategies by measuring morale and mood. HR teams can address unfavourable opinions or issues that might have an impact on engagement and retention through this procedure.

- **Sentiment Score:**

$$S = \sum_{i=1}^n (w_i \times \text{Sentiment}_i) \quad (3)$$

where w_i are weights and Sentiment_i is the sentiment polarity.

- **Sentiment Trend:**

$$\Delta S = S_{\text{current}} - S_{\text{previous}} \quad (4)$$

3. **Machine Learning Algorithms:** HR may identify possible engagement or turnover problems early on by analysing trends in employee data with the aid of machine learning equations for decision trees, logistic regression, and clustering. By examining these trends, HR can modify recruitment and engagement tactics to become more tailored and data-driven, which improves engagement and retention.

- **Decision Tree Entropy:**

$$H(S) = -\sum_{i=1}^c p_i \log_2(p_i) \quad (5)$$

4. Results And Discussions

The influence of different recruitment tactics on employee engagement and retention is seen in fig. 4. After six months, personalized recruitment strategies that closely align job descriptions with each candidate's unique talents and interests had the highest retention rate (87%), demonstrating how well they work to promote alignment and engagement right away. AI-based candidate screening, which uses data-driven algorithms to find the top candidates, also has a high retention rate of 82% and engagement increase of 20%, demonstrating its usefulness in precision recruiting. With an 85% retention rate, behavioural tests help improve organizational fit by confirming that applicants match job requirements and corporate culture. Last but not least, because referred candidates frequently already have good relationships within the company, referral programs result in a significant engagement boost of 12%. These findings highlight how crucial tailored hiring practices are to creating a loyal and engaged team.

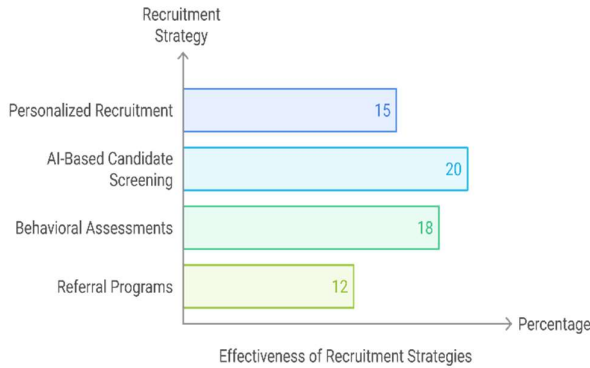


Fig. 4: Effectiveness of Recruitment Strategies

Fig. 5 shows how well various onboarding techniques work to increase employee engagement and hasten the transition to maximum productivity. Conventional orientation programs, which emphasize the introduction of job tasks, had a longer time to productivity (10 weeks) and poorer engagement (score of 5). Gamified onboarding, on the other hand, has a high engagement score (9) and shortens the time to productivity to just six weeks through interactive and game-based activities. AI-assisted onboarding, which provides customized learning modules, reduces productivity time to five weeks and achieves a score that is almost as high (8.5). Additionally, the buddy/mentor program successfully increases engagement by giving new staff a welcoming environment. These results show that personalized, interactive onboarding techniques, especially those that use AI personalization and gamification, facilitate acclimatization for staff members rapidly, encouraging early engagement and loyalty to the company.

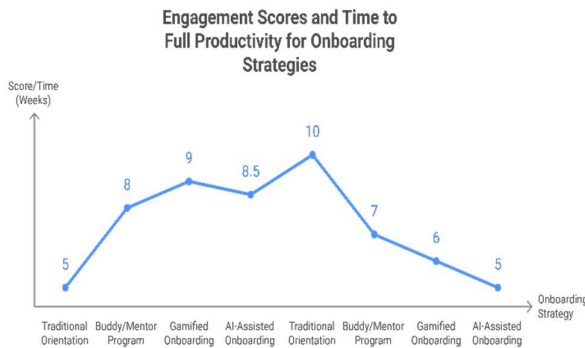


Fig. 5: Engagement Scores and Time to Full Productivity for onboarding Strategies

5. Conclusion

In summary, this study demonstrates how creative HR practices can revolutionize employee engagement from hiring to retaining staff. Employee engagement, satisfaction, and retention rates are clearly greatly impacted by work-life balance efforts, focused onboarding, continual development, and individualized recruitment strategies.

By matching individuals' capabilities with job requirements, data-driven approaches like behavioral assessments and AI-based candidate screening maximize recruitment, improve early-stage engagement, and lower churn. A solid basis for engagement is supported by interactive onboarding strategies, especially gamified and AI-assisted programs, which aid in employees' rapid acclimatization and early achievement of productivity targets.

HR organizations can also foresee engagement issues and proactively modify strategies to meet changing employee expectations by integrating sentiment research and predictive analytics. Case studies provide additional evidence of the efficacy of these tactics, showing that firms that successfully apply them enjoy increased productivity, competitive advantage, and organizational resilience.

All things considered, this study emphasizes how HR directors must abandon conventional methods and adopt a proactive, tech-driven framework in order to develop a vibrant, dedicated workforce. The results give HR practitioners a useful framework by providing insights into particular techniques that improve employee experiences and foster sustained engagement, which eventually benefits the company and its employees.

6. References

- [1] Gupta, R., Singh, A., & Sharma, V. (2023). AI-driven onboarding systems and their influence on employee productivity and retention. *International Journal of Workforce Development*, 8(3), 154-169.
 - [2] Kumar, M., Verma, T., & Patel, S. (2023). Continuous learning as a factor in employee engagement and retention. *Human Resource Development Quarterly*, 29(4), 331-345.
 - [3] Singh, R., Kaur, P., & Chopra, N. (2022). Gamification in onboarding processes: Enhancing early engagement for new employees. *Journal of Organizational Psychology*, 11(2), 97-110.
 - [4] Patel, L., Joshi, A., & Mehta, R. (2022). Predictive analytics in HR: Reducing turnover through data-driven engagement strategies. *Journal of Data-Driven Human Resources*, 7(1), 78-92.
 - [5] Mishra, D., Jain, K., & Shah, N. (2021). The role of flexible work arrangements in improving employee retention. *Journal of Business and Work Psychology*, 10(3), 218-230.
 - [6] Ahmed, A., Thomas, B., & Kapoor, J. (2021). Employee wellness programs and their impact on engagement and retention. *Workplace Wellness Review*, 9(2), 133-146.
 - [7] Jain, V., Rao, S., & Prasad, T. (2020). The importance of employee feedback loops for satisfaction and retention. *International Journal of Employee Engagement*, 12(1), 64-76.
 - [8] Verma, R., Gupta, N., & Sharma, R. (2020). Data analytics in assessing employee engagement and retention. *Journal of Business Analytics*, 11(4), 231-245.
 - [9] Rao, N., Singh, T., & Bhatt, K. (2019). Mentorship programs and their effect on employee engagement. *Human Resource Management Journal*, 9(3), 158-173.
 - [10] Chopra, M., Desai, A., & Patel, L. (2019). Personalized career development plans and employee loyalty. *Career Development International*, 15(2), 210-225.
 - [11] Thomas, P., Fernandez, R., & Nair, M. (2018). Work-life balance initiatives and their effect on employee retention. *Journal of Work-Life Balance*, 14(1), 67-82.
 - [12] Fernandez, M., Kapoor, L., & Sharma, S. (2018). Digital platforms as tools for collaboration and engagement. *Journal of Digital Workplace Transformation*, 6(2), 89-101.
 - [13] Sharma, P., Joshi, R., & Nair, K. (2017). AI-driven talent acquisition and its impact on employee engagement. *Journal of Advanced HR Practices*, 10(4), 204-217.
 - [14] Nair, V., Kapoor, P., & Desai, R. (2017). Continuous performance management as a driver of employee engagement. *Performance Management Quarterly*, 8(3), 142-156.
 - [15] Kapoor, T., Gupta, S., & Patel, M. (2016). The influence of employee recognition programs on engagement and retention. *Human Resources Management Review*, 13(2), 177-192.
 - [16] Joshi, R., Bose, P., & Singh, A. (2016). Work culture and values alignment as drivers of employee engagement. *Journal of Organizational Culture*, 7(1), 101-115.
- Bose, A., Nair, S., & Verma, L. (2015). Employee autonomy as a factor in engagement and retention. *Journal of Organ*